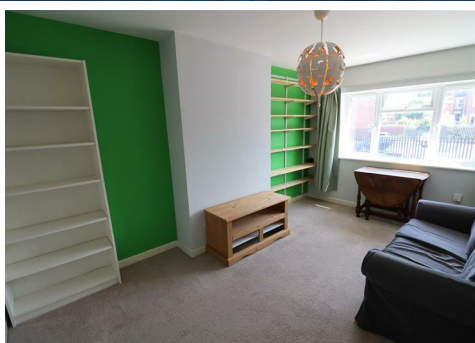


# VIEWINGS FULLY BOOKED

We are sorry but we are fully booked for viewings for this property.

If you would like to view similar properties  
please contact one of our local offices.



## 167a Albany Road, Coventry, CV5 6NE

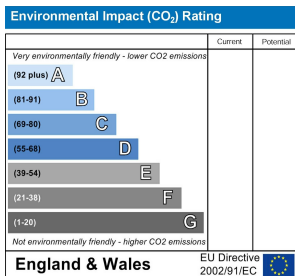
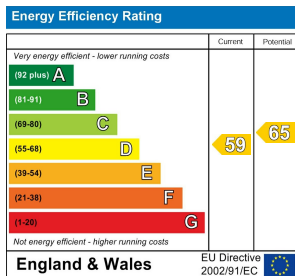
\*\*\*Available Now - Council Tax Band A\*\*\*

Loveitts are pleased to present this two bedroom located in Earlsdon, Coventry. The property briefly comprises of entrance hallway, spacious living room, modern fitted kitchen, utility room, two double bedrooms and a family bathroom with bath - shower above, w/c and sink.

The property benefits from a rear parking space, balcony and has been redecorated throughout.

- Earlsdon, Coventry
- Two Bedroom First Floor Apartment
- Modern Look Throughout
- Furnished Property
- Allocated Parking
- All Electric
- Balcony

**£850 PCM**



29 Warwick Row, Coventry, West Midlands, CV1 1DY  
 Tel: 02476 635555 Email: coventrylettings@sheldonbosleyknight.co.uk

